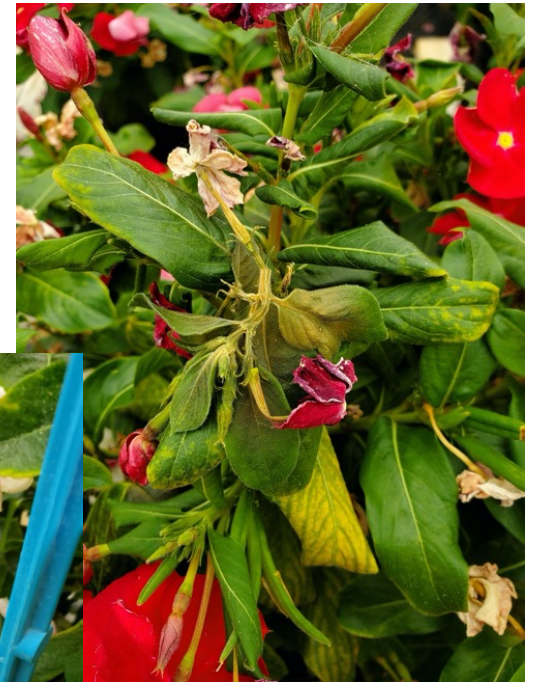


TECH TIP: WATER-SOAKING LESIONS ON VINCA

Question: Can you help me identify this damage to my vinca crop? Is it a result of aerial *Phytophthora*?

Answer: Water soaking lesions on vinca caused by *Rhizopus stolonifera* (all three photos) can look a lot like water soaking lesions caused by *Phytophthora nicotianae* (aerial *Phytophthora* blight). It's not difficult to differentiate them microscopically, which is important because treatment and recommendations for management might be different for both.

If you see visible damage like this, your best action is to send in plant samples to a lab for diagnosis.



BALL TECH ON DEMAND™