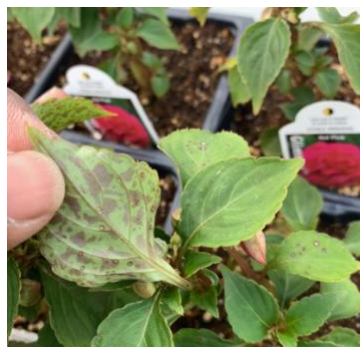


SEPTORIA ON IMPATIENS WALLERIANA

In a past season with cool weather we talked to a grower with a large crop of Impatiens Downy Mildew (IDM)-resistant *Impatiens walleriana*. First off, kudos to this operation for moving into these new highly-resistant genetics! However, they were very concerned when they saw dark discolored spots popping up on some of their incoming plugs and contacted us for help. So, what's happening in the picture here?



Good news for anyone else who is seeing this on their impatiens – *it's not IDM*. In this case, *Septoria* leaf spot (another lovely fungal disease) is the culprit.

Symptoms are pretty distinctive, so if you see tannish-gray leaf spots with dark purplish or even blackish-looking borders, you've probably got *Septoria*. Cultural management helps reduce infection significantly, so avoid keeping foliage wet for long periods (this will also help combat other leaf wetness-related issues, including IDM), increase air flow in your greenhouse, and space out plants wherever possible. Chemical control can be achieved using a broad range of biologicals and conventional chemistries, and many chemistries labeled for controlling fungal leaf spot diseases fall into this category, including copper-based compounds, chlorothalonil, thiophanate methyl and mancozeb, to name a few. *And as a reminder – always check the label before applying.*