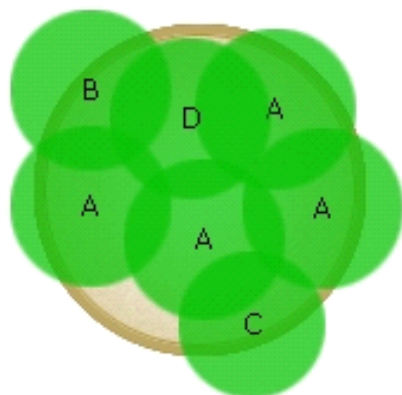


## #61

Big bold size. All plants work together in this combo. Home gardeners will like the complementary colors of coral and purple.



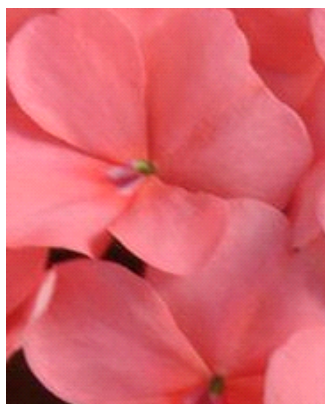
14 in. (35 cm)  
container



Warm Season



Plants in Container



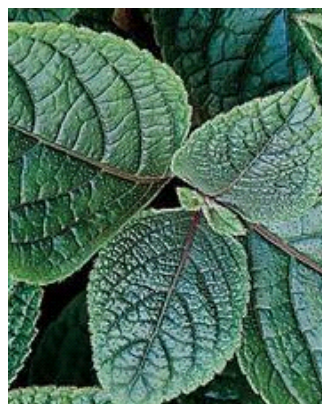
A

Dazzler® Coral Impatiens



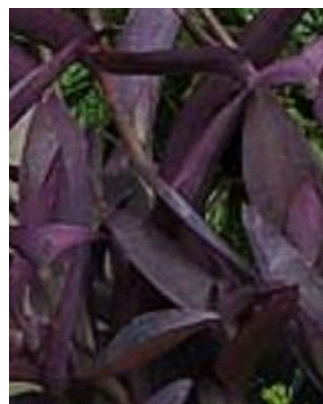
B

Magilla® Purple Perilla



C

Nico Plectranthus



D

Purple Heart Setcreasea