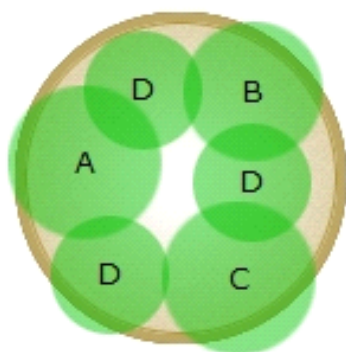




Kongs Lady

The taller flowers and foliage in this combo rest on a "bed" of Purple Lady Iresine, a great choice for the shade.



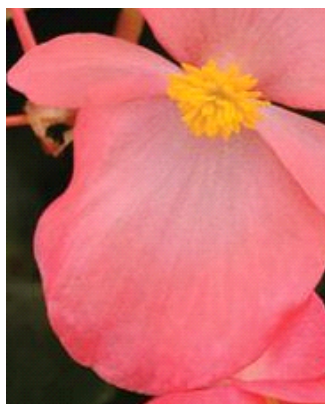
12-14 in.
container



Warm Season

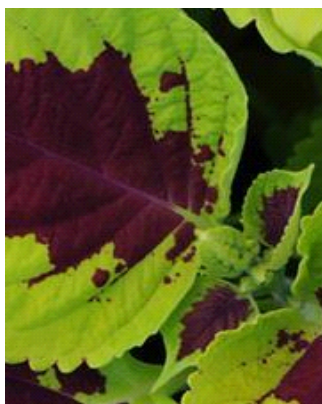


Plants in Container



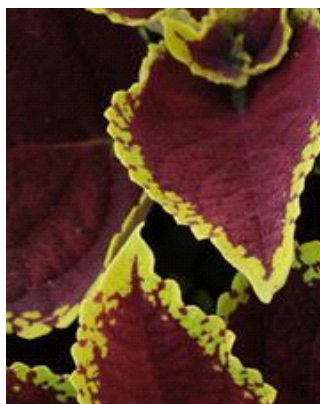
A

Whopper® Rose With
Green Leaf Begonia



B

Kong® Lime Sprite Coleus,
Premium Shade



C

Kong Jr.™ Scarlet Coleus,
Premium Shade



D

Purple Lady Iresine