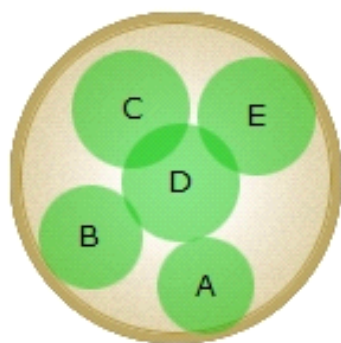


#26016

A bright design to create a colorful oasis. Add in Croton Petra to give an extra touch of the tropics, and a trellis can support the vertical growth of the Mandevilla.



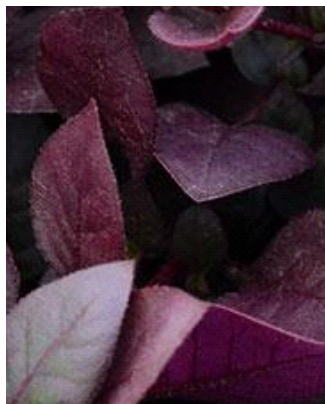
24" container



Warm Season

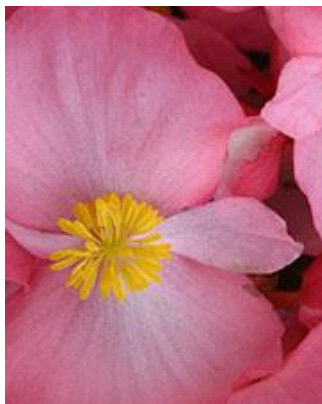


Plants in Container



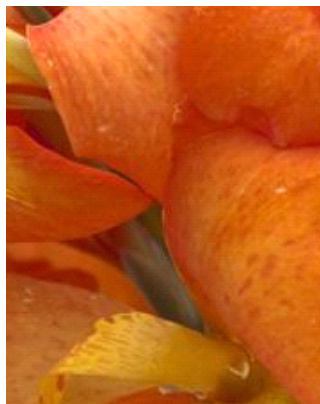
A

Purple Prince Alternanthera



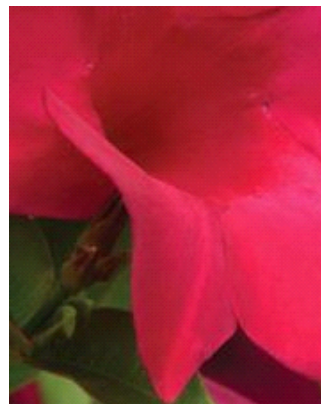
B

Megawatt™ Pink Green
Leaf Begonia



C

Cannova® Orange Shades
Canna



D

Tourmaline Fuchsia Bush
Mandevilla