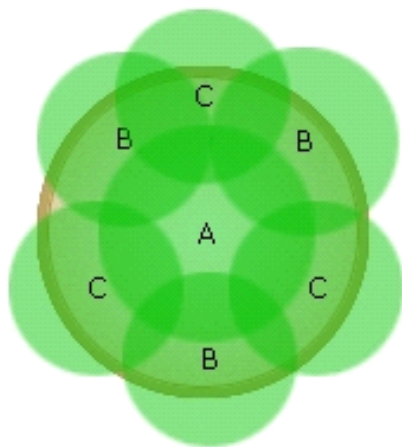


20

This stunning combination performs best during the hottest days of the Summer. Each plant loves the heat and will thrive with regular watering and fertilizer - especially the Hibiscus - which likes moist soil.



**18 in. (45 cm)
container**



Warm Season



Plants in Container



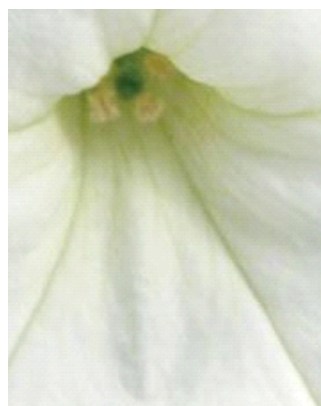
A

Hibiscus Luna™ Red



B

Purple Lady Iresine



C

Easy Wave® White
Spreading Petunia