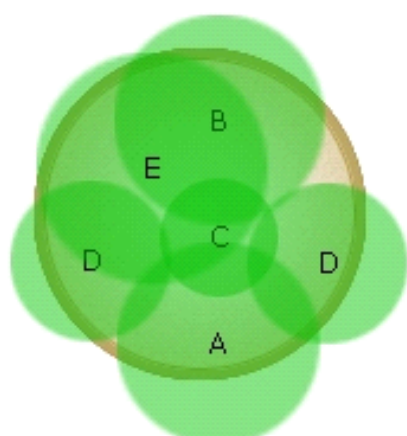


#48

The dark leaves of the foliage plants in this combination provide a beautiful contrast to the bright colors of the Marigolds and Petunias. Purple Knight Alternanthera tends to mature to a darker color in full sun, but will still offer the best performance with regular waterings and feedings. All of the plants in this container are very heat tolerant.



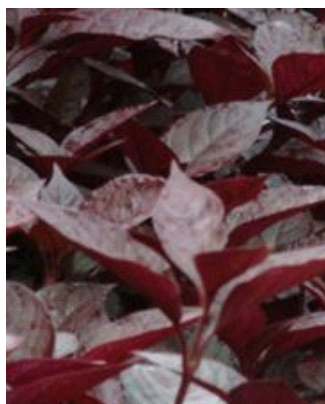
14 in. (35 cm)
container



Warm Season

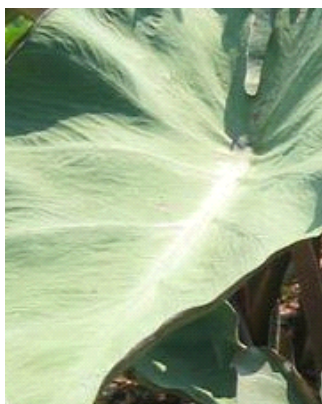


Plants in Container



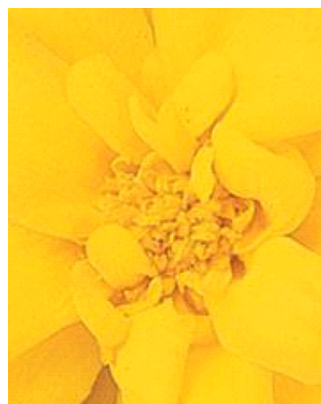
A

Purple Knight Alternanthera



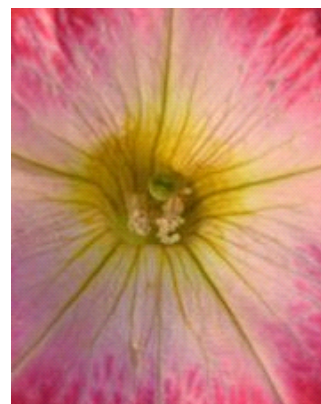
B

Maui Magic Colocasia



C

Durango® Yellow French
Marigold



D

Madness® Red Morn
Petunia



E

Mystic Spires Blue Salvia