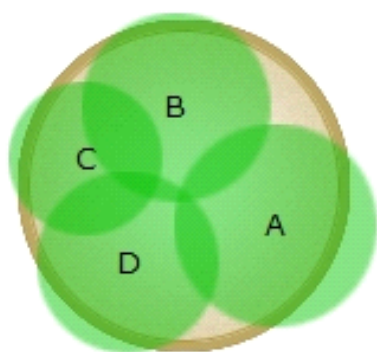


Mocha Java

The multiple color patterns and leaf shapes allow you to use Coleus with a variety of colorful annuals. But be sure that the Coleus you're using matches the same exposure as your annuals – you don't want to use a shade Coleus with a full sun Lantana. This particular mixed combo features full sun varieties.



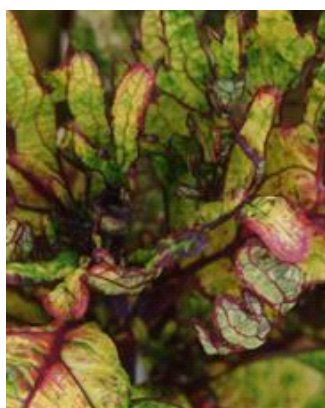
**16 in. (40 cm)
container**



Warm Season



Plants in Container



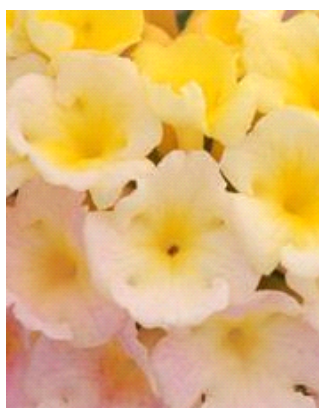
A

Mint Mocha Coleus



B

Twister Juncus



C

Lucky™ Lavender Lantana