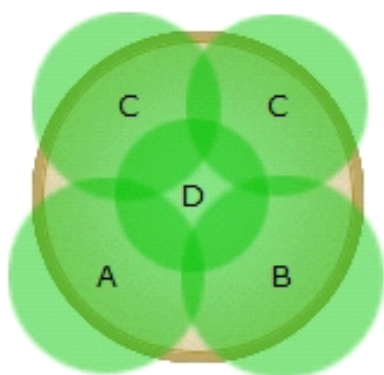


## #55

This unique color-changing foliage container consists of Ornamental Millet, which adds interest, height and bulk. Its leaves catch the light when they begin chartreuse, then alter to burgundy and on to bronze. The centerpiece is paired here with trailing Alternanthera, whose leaves appear in copper and purple tones, and multicolored Coleus. A quick flash of bright red from Dragon Wing® Begonia adds a final punch.

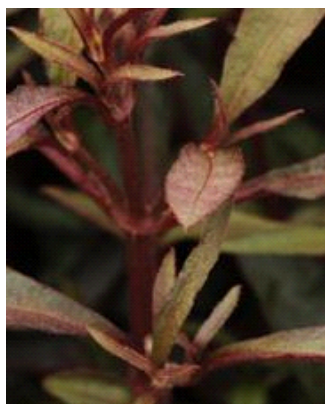


16 in. (40 cm)  
container

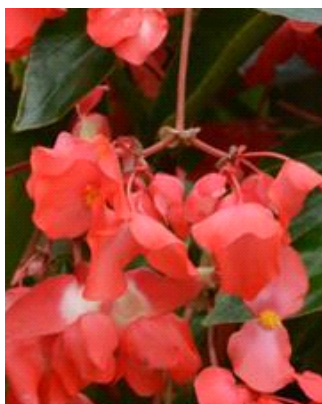


Warm Season

Plants in Container



A



B



C

Red Threads Alternanthera

Dragon Wing® Red  
Begonia

Jester Ornamental Millet